

Keefe Trumpets

Williamsport, PA

1909-1941

Although Henry Distin rarely built any trumpets, it seems that Brua Keefe made at least a few shortly after taking over the company in 1909. The earliest I have a record of is #828 and marked with the early stamped "Highest Grade" logo.

The Weatherwax brothers toured the country in 1910-1917 and used two Keefe Eb trumpets shown in this undated photo c.1910.

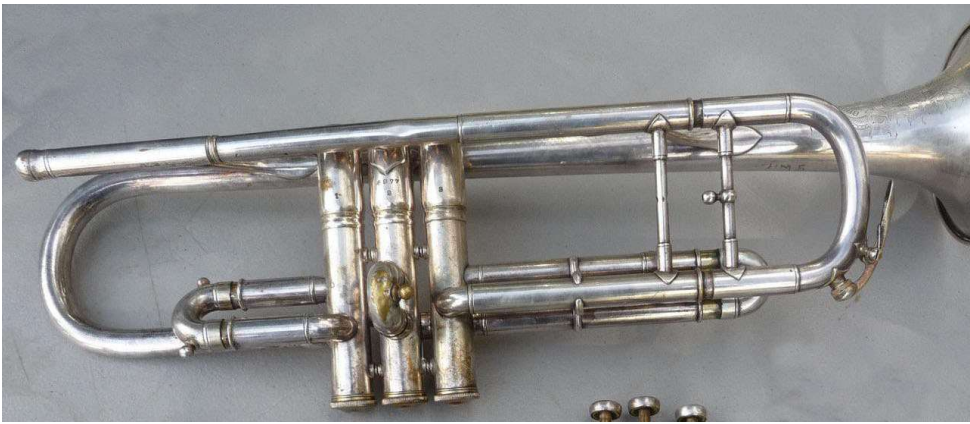


There are only a few examples found before serial numbers jump to 5000.

#6984 c.1913, This still carries the Highest Grade label carried over from Distin. (auction photos below and #1 & 2 page 1)



#7007 c.1913 (auction photo)



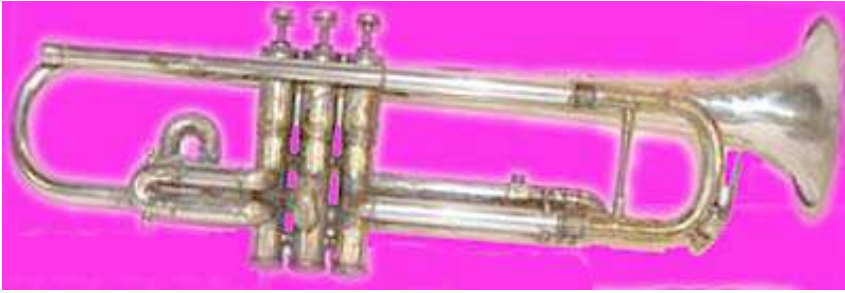
#7670 c.1914 (Horn-u-copia.net)



#10368 with Union label & USQMC for a military contract c.1917 (author's photos below, p1 #3 & #1&2 at right). In 1922, this is referred to as the Stentor model.



#10618 Cabaret model c.1920 (Horn-u-copia.net)



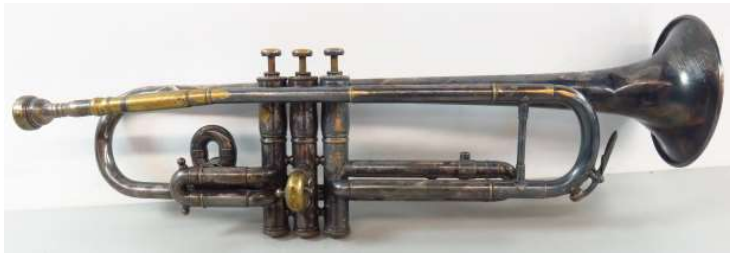
#10698 c.1918 with USQMC mark



#11620 Cabaret model c.1920 (auction photos below & #1)



#11644 Cabaret model c.1920 (auction photo)



#11883 c.1921 (auction photos below & #2)



#11987 Cabaret model c.1921 (below & #1 at right)



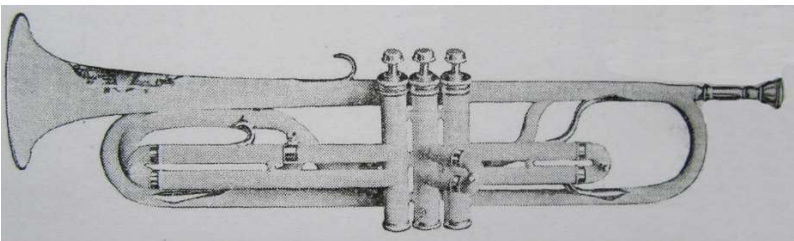
#12122 Cabaret model c.1922 (Horn-u-copia.net)



1922 Trumpet ad – “Cabaret Caliber” name was used for trombones as well



1922 Catalog illustration of new Eb Bass trumpet



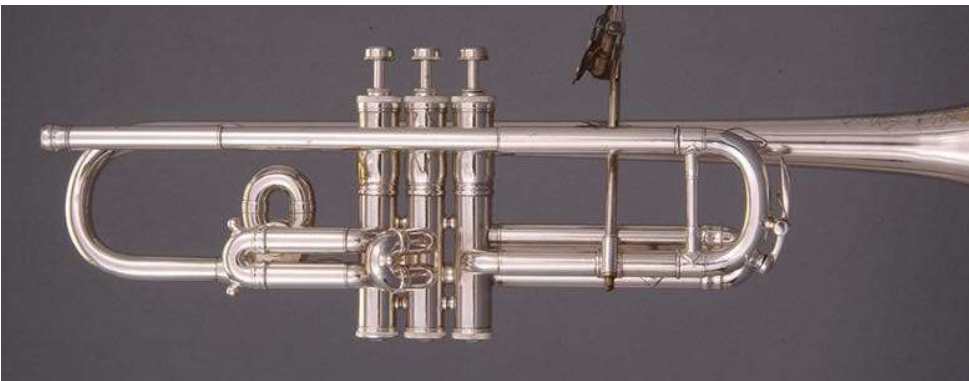
Matching bass trumpet #12978 c.1924 (below & #2-4)



#12422 Cabaret model c.1923 (auction photo)



#12620 c.1923 (National Music Museum below & #1)



#12733 Stentor model c.1924 (auction photo below & #2)



#10006 Keefer – Williams model c.1924 (auction photo next pg.)

This is the earliest example I have found, and they are using a different serial number sequence which probably started at 10000. These were designed by Brua Keefer Jr and trumpet player Ernest Williams, who later founded the Williams School of Music in Brooklyn. The 1924 catalog does not have these but a February 1925 ad says the new trumpets were developed over the past year.





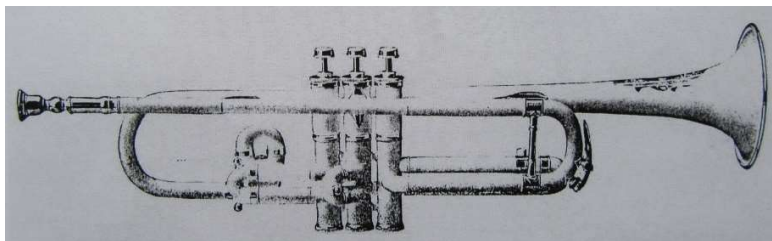
The bell engraving for #10006 at right is crudely done.
 These were designed after the French Besson trumpets (below;
 Robb Stewart photo)



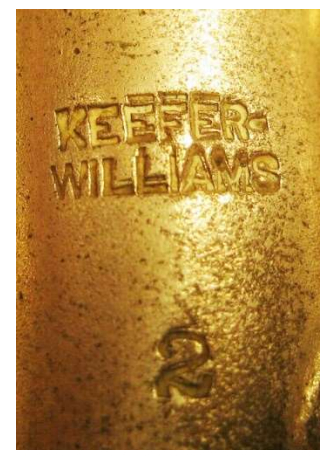
Keefe – Williams #10008 c.1924; #2 bore (auction photo)



1924 Catalog page showing the Stentor model trumpet which
 looks just like the earlier Cabaret model.



#10033 Keefe-Williams model c.1925 (below & #2-3)



#13032 Stentor model c.1925 (auction photos below & #1 at r.)



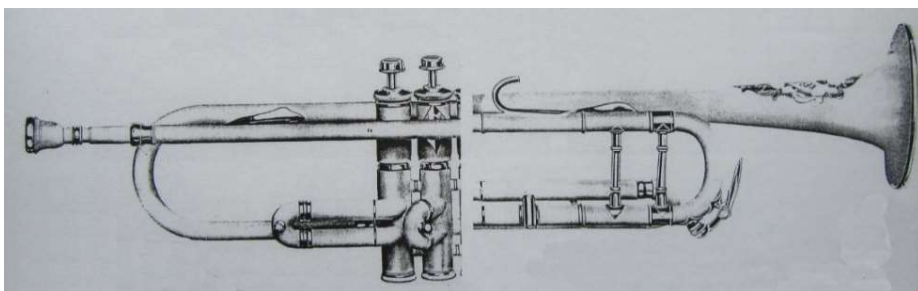
#13041 Stentor model c.1925 (auction photo)



#13131 Stentor model c.1925 (auction photos below & #2)



1924 Catalog page showing the new “Harmonic” series trumpets which were marked with three numbers: #1 for Philharmonic (38oz) for orchestra use, #2 for Milharmonic (36oz) for military use, and #3 for Dansharmonic (32oz) for dance bands. Along with these were introduced the Maestro model mouthpieces in #1 for medium cup and rim, #2 for medium cup and wide rim, and #3 for shallow cup and medium rim.



#13181 Harmonic model c.1925 (auction photo)



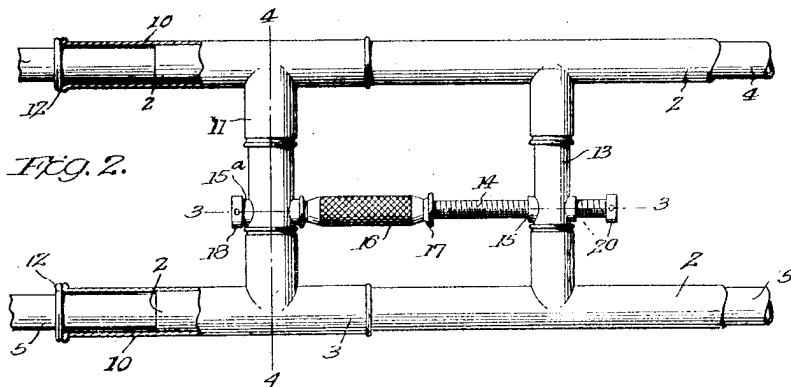
#13274 Harmonic model c.1925 (below & #1)



#13339 Stentor model c.1925



Patent #1,555,986 was granted to Brua Keefer Jr and worker Eugene Galetti on October 6th, 1925 with assignment to the Keefer Co. This was a tuning slide adjustment used on some trombones and trumpets. They applied for this on May 29th, 1923 and although they don't show up in the 1924 catalog, they may have started using them later that year. (photos 3 & 4 of #13350)



#13350 with new tuning slide adjuster and unique 1st slide trigger
c.1924 (auction photos below & #1 at right)



#13355 c.1924 (auction photo below & #2)



#13624 c.1925; a rare example with reversed 3rd slide (auction photo)



#13669 Philharmonic model #1 c.1926 in gold plate
(author's collection below & #3 at right)



#10053 "JR-2" model c.1925 (auction photo)



#10056 c.1925 – marked "JR" & "2" on middle valve; the design is like the Williams models but without the third slide ring; pinky ring is a replacement & lead pipe has a repair collar; shown with a Maestro model 1 mouthpiece; 0.435" bore, 4-11/16" bell, 19-1/4" long (author's photos below & #1)



#10060 "JR-2" model c.1925 (author's photos below & #2&3)



Original case, oil can, mouthpiece & Couesnon mute for #10060.

The case is stamped with the Bull's Head Trademark with F&F which dates this to between 1920 and 1928 when Felsburg & Co. of Newark, NJ owned that mark.



#10098 c.1925 – Williams model also with “JR” (Brua Jr design?) and “2” (auction photos below & #1 at right)



#20002 Intonatic model c.1925 (Pascal photo below & #2)



At this time, all trumpets appear to combine serial numbers starting with 24000. The Stentor model seems to have been dropped, the Harmonic trumpets go up to 13700, the “JR” model is dropped, and the Keefer – Williams model goes up to 10098. There are no serial numbers found in the 14000 to 18000 range and very few in the 18000 to 22000 range with no trumpets except the example above. In my dating, I have assumed a start for the Williams model in 1924 with a steady production rate up to 1930 then a slower rate through the Depression up to 1941.

#24000 Harmonic model c.1927 (below & #3)



#24074 Dansharmonic model #3 c.1927 (auction photo)



#24100 Keefer-Williams model c.1927. This has some of the finest engraving ever done by Charles Otto. (below & #1)



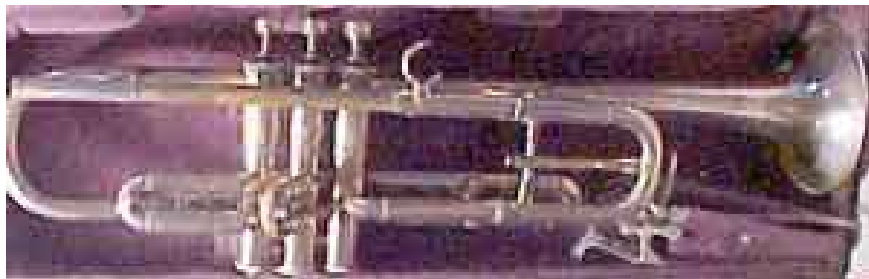
#24108 c.1927 (auction photos below & #2)



#24405 Milharmonic #2 with a micro-tuner slide and new pinky ring c.1928 (auction photo)



Here is another of the same design – serial number not known (HUC)



#24468 – c.1928 (HUC, below & #1)



Williams model – note the second slide angled forward, serial number not known (auction)



#24480 Keefer-Williams #2 (0.438”) model c.1928 with hammered bell. (auction photos below & #2-3 at right)



#24516 Williams #1 (0.458") c.1928 is a rare example with the 3rd slide ring on top. It also has separate Bb & A tuning slides with oval braces. (author's coll. below & #1-2 at right)



So far, I have recorded five from a short period when they created a hand-hammered finish on the inside of the bell.

#24589 Dansharmonic #3 c.1928 (auction photo below & #3)



#24xxx Williams model c.1928



#24756 Harmonic model c.1929 (auction photo)



#24774 Keefer-Williams c.1929 (auction photos below & #1)



#24819 Williams model c.1929 (auction photo)



#24875 Harmonic #2 c.1929 with unique first slide saddle and broken tuning adjuster. (auction photos below & #2-3)



I have no idea how that saddle is supposed to work!

#24932 Williams model c.1929 (auction photos below & #1-2)



Case tag from #24932 matching a common bell engraving



Keefers-Williams mouthpiece from #24932



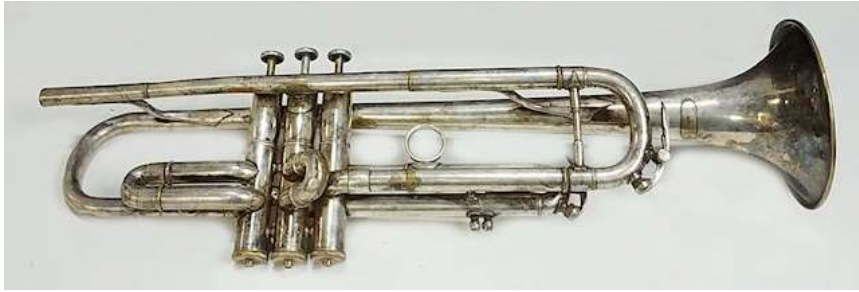
#24968 Williams #1 model with 0.458" bore c.1929 (auction photos below & #3 at right)



#25000 Keefer-Williams #3 c.1930 (below & #1 at right)



#25171 Keefer-Williams #1 c.1932



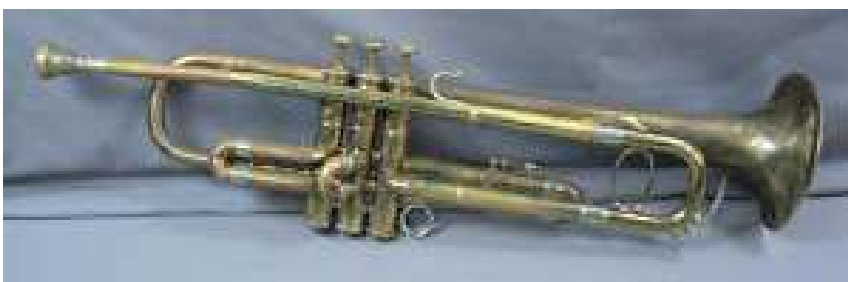
#25272 Williams #2 model c.1933 with forward 2nd valve slide (auction photos below & #2-3 at right)



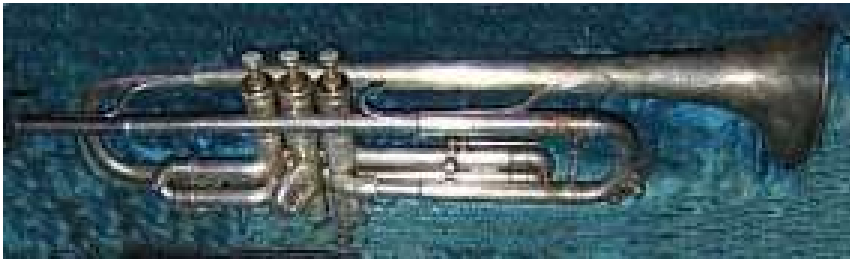
#25341 Williams #1 (0.458") c.1934 (author's photo)



#25361 Keefer-Williams Special model - c.1934 (auction photo)



#25429 Keefer-Williams model c.1935 (HUC)



#25455 Keefer-Williams Special #1 c.1935 (below & #1)



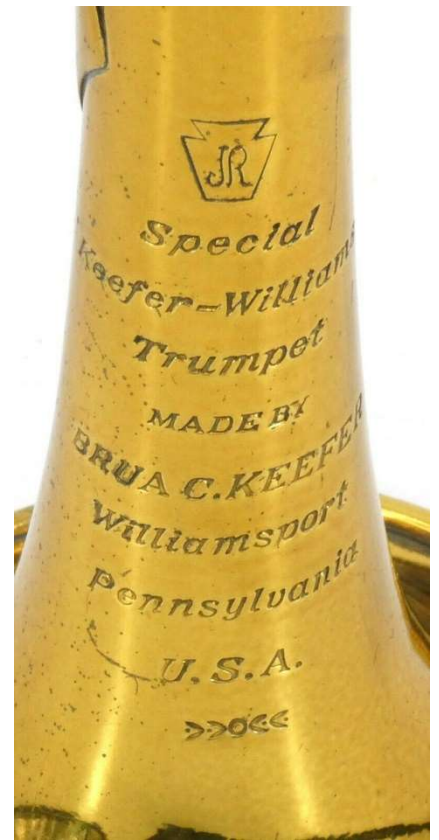
#25490 Keefer-Williams Special c.1936 (below & #2)



#25500 Keefer-Williams model c.1936 (below & #3)



#25516 Williams #1 model with "JR" c.1936 (auction photo)



October 1929 ad in Boy's Life magazine



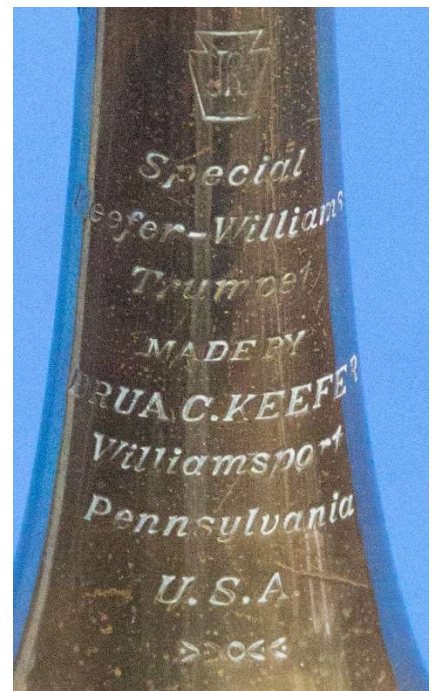
FREE

Study
in Tone
Production

A Daily Drill on the Cornet for
Lips, Lungs, Tongue and Ear

Written by W. PARIS CHAMBERS, the
greatest of all Trumpeters and Instructors on
the **Trumpet**. Famous for his album of Cornet
solos. This wonderful exercise was prepared
especially for Brua C. Keefe, Jr. and will be
mailed free of charge to any reader of this pub-
lication. Write for it today, a postal card with
your name and address printed plainly will do.

Address
Brua C. Keefe Mfg. Co.
Williamsport, Pa.
Manufacturers of the Famous
KEEFE-WILLIAMS TRUMPETS
AND
KEEFE-SIMONS TROMBONES



#25521 Keefe-Williams Special model c.1937 (author's photos below & #3-4 at right)



#25552 Williams model c.1937 (auction photo)



#25714 Williams #3 model c.1940 (auction photos below & #1)



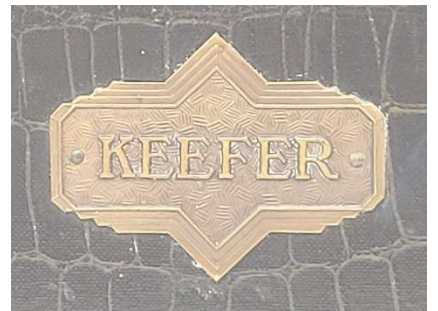
#25733 Williams "JR" #2; 0.435" bore; 4.625" bell; 19.6" long
(author's photos below & #2-3 at right)



#25751 Keefer-Williams JR-2 c.1940 (auction photo)



#30097 Custom Large bore 0.463" c.1941 (author's photos)



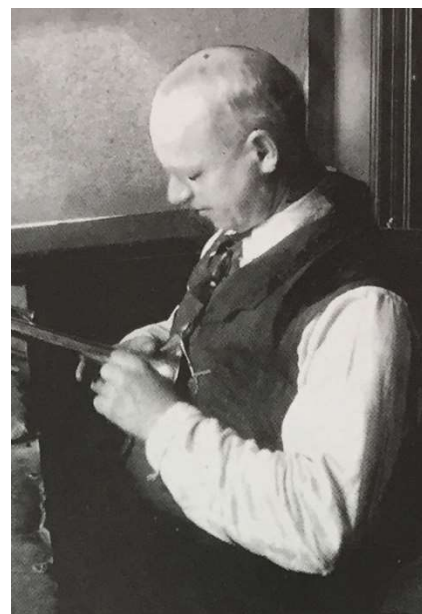
#31058 – Intonatic model – c.1941 - 0.465" bore (HUC); the highest number I have found



Keffer Maestro Model 1 gold-plated mouthpiece. In 1924, the Model 1 was a medium cup & rim, Model 2 was medium cup with wide rim, & Model 3 was shallow cup with med. rim. (author's photo)



Long-time engraver Charles Otto at his bench in 1922.



Advertising / 1920-1928

October 1920 *International Musician*

The Keefer "Stentor" Trumpet in Bb and A
A brand-new model--22 1/2 inches in length



10 LESSONS BY THE GREAT JOHN HAZEL

Well calculated to enlarge the range and improve the technic of any man who will study them—sent free with every "Keefer" Cornet or Trumpet.

IN an instant—in just time enough to sound one note—the player used to stumpy little Trumpets will be entirely captivated by this New "Stentor" Trumpet.

It is twenty-two and a half inches long! It is made that long to get proportions that give a soaring, resonant volume and a trumpety brilliance far and away superior to any trumpet ever before modeled.

It has that quality of blending with the wood-wind and string instruments—and has it developed to a degree that will surprise you.

\$20 cash and balance on easy monthly payments! Full week's trial allowed. Old instrument may be traded in as part payment. Complete catalog mailed free to any address.

BRUA C. KEEFER MFG. CO.
 The World's Largest Producer of Highest Grade Band Instruments
 BRUA C KEEFER, President **WILLIAMSPORT, PA.**



January 1921 *International Musician*

Three Great Experts Modeled It



THE "STENTOR" TRUMPET
 Full 22 1/2 inches in length

JOHN HAZEL, PARIS CHAMBERS AND THEIR PUPIL, BRUA C. KEEFER, JR.

This is the trio that worked out every contour and proportion of the dulcet-toned Stentor Trumpet. Both Chambers and Hazel tutored Brua C. Keefer, Jr., in music, after he had mastered theoretic acoustics and physics (among other things) in the best universities of the East. With the Test Room of the Keefer Shops as their studio, and the whole plant practically at the disposal of these two great soloists and teachers, every nook and corner and tool and material in which was familiar to Brua C., Jr., it is no wonder such a magnificently-formed and gorgeously-intoned Trumpet resulted. Five hundred of the best men in the profession bought Stentor Trumpets in four months—that tells you!

Twelve Lessons by John Hazel and a Folio of Daily Drills by Paris Chambers

Both will be sent free with every Keefer Cornet or Trumpet ordered. The Hazel lessons are essays—not music—in plain English that will make any man a better player. The Chambers Drills put in practice all the Hazel pointers.

Mailed to any address for \$2, postpaid. Best lessons ever put into print.

\$20 cash and \$6 per month are the easy terms it is offered on. Week's trial allowed, and arrangements made for taking in trade your present instrument.

Complete Catalog Free

Brua C. Keefer Mfg. Co.
 The World's Largest Producer of Highest Grade Band Instruments
 BRUA C KEEFER, President **WILLIAMSPORT, PA.**

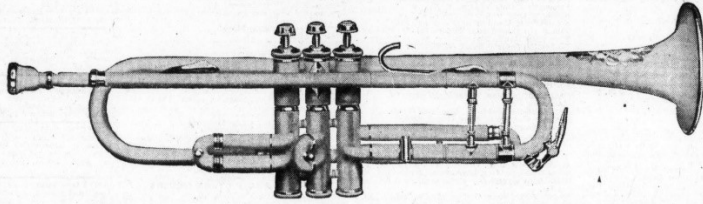


Three New Keefer Trumpets

Model 1, Concert Band and Symphony; Weight 2 lbs., 6 oz.

Model 2, Military Band and Orchestra; Weight 2 lbs., 4 oz.

Model 3, Dance Band and Light Orchestra; Weight 2 lbs.



FOR solo, ensemble, symphony or dance; for fox-trot or military march. For anything and everything the trumpeter ever has to do, this model in three weights offers just the right instrument.

Model 1 has lots of resistance, a powerfully pealing tone that has never been equaled for actual brilliancy and splendor. For solo or concert band or symphony ensemble we'll match it against anything the world has produced.

Model 2 is a business player's trumpet. It is equally at home in military march or fox-trot, and light enough so the average job is never tiring.

Model 3 will be our big seller. It is—we guarantee—the lightest and easiest blowing trumpet made today. It is designed for dance

band and orchestra. Its light weight prevents tired arms and wrists and makes it easy blowing. It blows as lightly with the mute as without it. It has a magnificent quality of tone muted as well as open. Its intonation in all keys is wonderfully accurate.

If you're a dance man, here's a model made to your specifications, one with a smackingly pealing tone, particularly bright in the upper register and resonantly sweet in the lower register, and one you've never met the equal of in easy blowing. If you're a business player, Model 2 will give you finer tone and easier work. If you're a soloist, or play in concert band or grand orchestra where rests are plentiful, Model 1 will change your ideas on solo trumpet construction.

Either one or any two sent on trial. Old instrument may be traded in. Time terms made easy. Ask for catalog and price list.

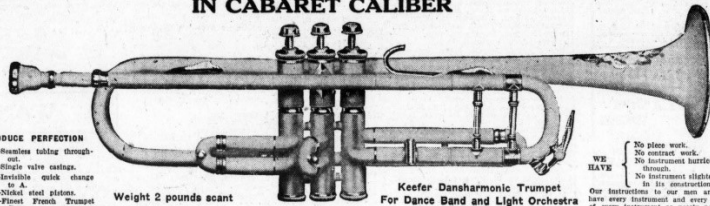
BRUA C. KEEFER MFG. CO., Williamsport, Pa.

DEALERS WITH STORES:
WRITE FOR OPEN TERRITORY AND TRADE TERMS

CHICAGO REPRESENTATIVES
BURCH & PONDER, 339 S. Wabash Avenue

KEEFER DANCE BRASSES

IN CABARET CALIBER



TO PRODUCE PERFECTION

- WE USE
- 1—Machines taking through-out.
 - 2—Single valve cutups.
 - 3—Invaluable quick change in A.
 - 4—Nickel steel pistons.
 - 5—Finest French Trumpet Brass.

Weight 2 pounds scant

Keefer Dansharmonic Trumpet
For Dance Band and Light Orchestra

WE HAVE

- No piece work.
 - No contract work.
 - No instrument hurried through.
 - No instrument slighted in its construction.
- Our instructions to our men are to have every instrument and every part of every instrument as nearly perfect as possible.

The transformation of the dance orchestra from a string instrument to a wind instrument basis created an enormous demand for light-blowing Trumpets, Trombones, Alto-phones and BB₇ Basses.

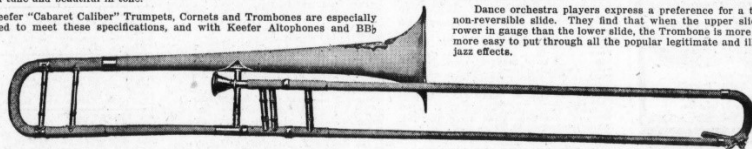
Brasses a man is called upon to play through a dance program running from 8 P. M. to as late as 2 or 3 A. M. must be easy in embouchure, easy blowing, light in weight, convenient in hand-hold, even in balance and, of course, true in time and beautiful in tone.

Keefer "Cabaret Caliber" Trumpets, Cornets and Trombones are especially modeled to meet these specifications, and with Keefer Alto-phones and BB₇

Wagner-phones they offer the dance orchestra a selection of instruments that cannot be equaled by any other maker.

Rapiano Mutes made especially to fit Keefer Cornets, Trumpets and Trombones—and that really do fit and hold tight in the bell—show that we have left nothing undone that would add to the effectiveness of Keefer Cabaret Caliber instruments or to the comfort or convenience of the men who play them.

Dance orchestra players express a preference for a two-gauge, non-reversible slide. They find that when the upper slide is narrower in gauge than the lower slide, the Trombone is more tractable, more easy to put through all the popular legitimate and illegitimate jazz effects.



For any effect, from a "smear" or laugh to a blooey "blue" refrain, the Keefer Cabaret Caliber Trombone will prove a hit with any Trombone player and with any audience.

Ask for complete Keefer catalog, with easy terms given. Your old instrument may be traded in.

BRUA C. KEEFER MFG. CO., Williamsport, Pa.

CHICAGO REPRESENTATIVES: BURCH & PONDER, 339 S. WABASH AVENUE

WASHINGTON REPRESENTATIVE: GEORGE E. BRENNER, SEATTLE

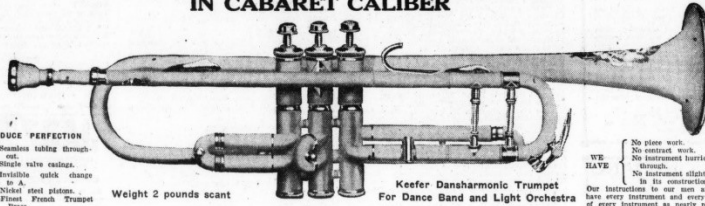
CALIFORNIA REPRESENTATIVE: HENRI R. WELCH, OAKLAND





TO PRODUCE PERFECTION
 1.—Seamless tubing throughout.
 2.—Single valve castings.
 3.—Invaluable quick change of A.
WE USE
 4.—Nickel steel pistons.
 5.—Finest French Trumpet Brass.

Weight 2 pounds scant



Keefe Dansharmonic Trumpet
 For Dance Band and Light Orchestra

WE HAVE
 No piece work.
 No contract work.
 No instrument hurried through.
 No instrument skimped in its construction.
 Our instructions to our men are to have every instrument and every part of every instrument as nearly perfect as possible.

Light French Trumpet Brass--Easy to Blow

IN CABARET CALIBER

THE old argument as to whether heavy brass makes a hard-blowing instrument and light brass an easy-blowing instrument has its answer here.

In this 2-pound Trumpet lightness of weight and lightness of blowing are worked out to perfection.

The man who liked a very heavy model for solo work with band, and now finds dance work puts too much strain on his lip and wind—he'll find this model **JUST WHAT HE WANTS.**

In every key it is finely in tune and has a tone-quality

that chimes beautifully with dance orchestra instrumentation—Banjo, Saxes, etc. Muted or open, it is the finest Dance Trumpet imaginable.

You'll say it's a labor-saver if you'll give it six days' trial before you make a decision whether to buy it or not. We allow you the six days' trial free.

Ask for our new just-off-press catalog, with prices, easy terms, etc., and showing illustrations of this same model in two other weights, up to 2 pounds, 6 ounces, besides all the Keefe Band Instruments down to BB \flat Wagnerphone, the best Bass for Band or Orchestra.

BRUA C. KEEFER MFG. CO., Williamsport, Pa.

CHICAGO REPRESENTATIVES: BURCH & PONDER, 339 S. WABASH AVENUE

WASHINGTON REPRESENTATIVE: GEORGE E. BRENNER, SEATTLE

CALIFORNIA REPRESENTATIVE: HENRI R. WELCH, OAKLAND

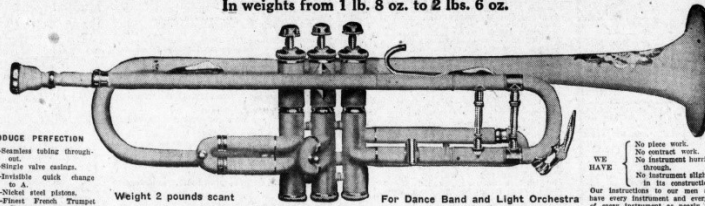
This is the first mention of an Eb trumpet.

4 MODELS—For Symphony, Band, Orchestra, Dance, Records

In weights from 1 lb. 8 oz. to 2 lbs. 6 oz.

TO PRODUCE PERFECTION
 1.—Seamless tubing throughout.
 2.—Single valve castings.
 3.—Invaluable quick change of A.
WE USE
 4.—Nickel steel pistons.
 5.—Finest French Trumpet Brass.

Weight 2 pounds scant



The Keefe Dansharmonic Trumpet in Cabaret Caliber
 For Dance Band and Light Orchestra

WE HAVE
 No piece work.
 No contract work.
 No instrument hurried through.
 No instrument skimped in its construction.
 Our instructions to our men are to have every instrument and every part of every instrument as nearly perfect as possible.

FRENCH Trumpet Brass—the same kind that made famous the Trumpets of the early French makers, now all passed away. That, to start with, is the firm foundation of the fine tone of Keefe Harmonic Trumpets.

Then the fine proportions, the clear bore through the valves, and the accurate workmanship, particularly in tuning the valve slides and in the fitting of the short-drop pumps.

Harmonic Trumpets come in three weights—2 lbs. for Dance Work (the Dansharmonic Model); 2 lbs. 4 oz. for Band and Orchestra players (the Milharmonic Model), and 2 lbs. 6 oz. for Symphony and Concert Band and Solo Work (the Philharmonic Model).

We also have a little Colorature Soprano Trumpet, weighing 1 lb. 8 oz., with the shortest drop action ever made. Very high-toned and very small bore. Fine for dance or record orchestra. Ask about it.

Whatever your line of work, one of these models will save your wind, your lip, ease the work of keeping your embouchure in the pink of condition, and give you a tone the like of which you've never heard before.

Ask for special folders or complete Keefe Catalog. Easy terms will be made you and your present Trumpet may be turned in as part payment.

BRUA C. KEEFER MFG. CO., Williamsport, Pa.

CHICAGO REPRESENTATIVES: BURCH & PONDER, 339 S. WABASH AVENUE

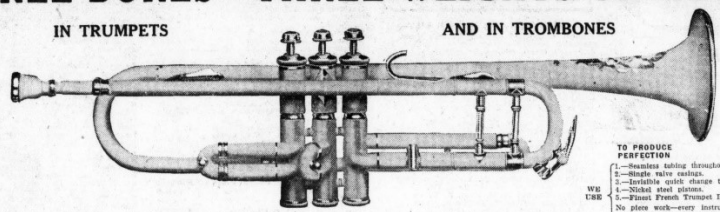
WASHINGTON REPRESENTATIVE: GEORGE E. BRENNER, SEATTLE

CALIFORNIA REPRESENTATIVE: HENRI R. WELCH, OAKLAND



THREE BORES---THREE WEIGHTS OF METAL

IN TRUMPETS AND IN TROMBONES



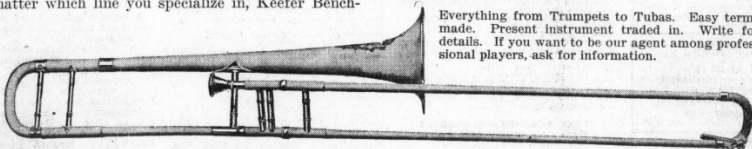
TO PRODUCE PERFECTION
 1.—Resonance tubing throughout.
 2.—Single valve castings.
 3.—Invaluable quick change to A.
 4.—Nickel steel piston.
 5.—Finest French Trumpet Brass.
 No piece work—every instrument made on day work and guaranteed.

WE USE

Small Bore, Medium Bore, Large Bore—2 lbs., or 2 lbs. and 4 oz., or 2 lbs. and 6 oz., in Trumpets. Trombones with Bell 6, 6½ or 7 inches, and corresponding weights. For dance work in lightest weight, for business players in band and orchestra in medium weight, for solo and symphony players in heaviest weight.

No matter which line you specialize in, Keefer Bench-Made Instruments will suit you better than the mail-order kind made in thousands for amateurs. Keefer instruments cost a little more than most makes—because they are a whole lot better than most makes. If fine tone, accurate tuning, perfect workmanship and easy blowing interest you, ask for the Keefer catalog and have a Keefer sent you for trial.

Everything from Trumpets to Tubas. Easy terms made. Present instrument traded in. Write for details. If you want to be our agent among professional players, ask for information.



BRUA C. KEEFER MFG. CO., Williamsport, Pa.

CHICAGO REPRESENTATIVES: BURCH & PONDER, 339 S. WABASH AVENUE
 WASHINGTON REPRESENTATIVE: GEORGE E. BRENNER, SEATTLE
 CALIFORNIA REPRESENTATIVE: HENRI R. WELCH, OAKLAND



THE DANCE BRASS TEAM



TO PRODUCE PERFECTION
 1.—Resonance tubing throughout.
 2.—Single valve castings.
 3.—Invaluable quick change to A.
 4.—Nickel steel piston.
 5.—Finest French Trumpet Brass.
 No piece work—every instrument made on day work and guaranteed.

WE USE

The Dance Band with a good Brass Team (Trumpets and Trombone and Tuba) generally collars all the good summer jobs.

When the Brasses are Keefer there can be no question of their excellence. First, they are made to play together. They are affinities in weight of metal, peculiarities of bore and character of tone.

The Dansharmonic Trumpet (weight but 2 lbs., scant) and the Dansharmonic Trombone (6½ to 7½ inch bell) go so well together that there's no comparing them with any other "battery." They are light, sweet-toned, easy to blow and have been balanced with a view to being used with the mutes.

The BBb Bass we make for Dance Band—the Wagnerphone—comes in all sizes of bell up to 30 inches.

If you're playing dance jobs, ask about our Dance Brasses in Cabaret Caliber. If you're playing in Brass Bands, ask about our Harmonic Trumpets and Trombones. Complete catalog will be sent on request, showing everything, including Saxophones, Drums, etc.

Easy Terms Made. Professional Agents wanted in various sections. Write us.



BRUA C. KEEFER MFG. CO., Williamsport, Pa.

CHICAGO REPRESENTATIVES: BURCH & PONDER, 339 S. WABASH AVENUE
 WASHINGTON REPRESENTATIVE: GEORGE E. BRENNER, SEATTLE
 CALIFORNIA REPRESENTATIVE: HENRI R. WELCH, OAKLAND



**A SOLO TRUMPET FOR CONCERT BAND
AND FOR SYMPHONY ORCHESTRA**



**KEEFE
PHILHARMONIC TRUMPET**

TO PRODUCE PERFECTION
 1.—Maximum tubing throughout.
 2.—Single valve casting.
 3.—Invaluable quick change to A.
 4.—Nickel steel piston.
 5.—Finest French Trumpet Brass.
 No piece work—every instrument made on day work and guaranteed.

WE USE

Good, heavy gauge French Trumpet Brass, a bore of considerable calibre and an action that is short and light, all combine to make the Keefe Philharmonic Trumpet the finest Trumpet for Concert Band and Symphony Orchestra.

It is an instrument for the man who knows his business and knows Trumpets, and wants the best there is.

It costs a few dollars more than the average Trumpet, and it's worth it!
 We'll send it, or the Keefe Philharmonic Trombone, on trial in competition with every similar instrument on the market. Old instrument may be traded in. Ask for catalog and Easy Terms schedule.

Easy Terms Made. Professional Agents wanted in various sections. Write us.



BRUA C. KEEFE MFG. CO., Williamsport, Pa.
 CHICAGO REPRESENTATIVES: BURCH & PONDER, 239 S. WABASH AVENUE
 WASHINGTON REPRESENTATIVE: GEORGE E. BRENNER, SEATTLE
 CALIFORNIA REPRESENTATIVE: HENRI R. WELCH, OAKLAND

#13669 (author's collection)



This trumpet is marked "No.1", which would imply the heaviest, large-bore Philharmonic model. The actual bore is 0.435". The threaded tuning adjuster was patented in October of 1925 and doesn't show up in advertising in the above examples from 1924.

Summary of Harmonic Series models from advertising:

Model	Bore	Weight	Name
#1	L (0.458")	38 oz	Philharmonic
#2	M (0.448"?)	36 oz	Milharmonic
#3	S (0.435")	32 oz	Dansharmonic

Was #13669 marked wrong? The weight is 33.5 oz without the mouthpiece, which puts it between #2 & #3. This may be a #3 model with added weight coming from the tuning slide adjuster.

Trumpet #24181 is marked "1" and has a 0.458" bore.



September 1924 *International Musician*

The earliest ad showing the tuning adjuster.

Earnest Williams played this model during the 1923-1924 winter concerts with the Philadelphia Orchestra.



KEEFE HARMONIC TRUMPET

The Greatest Trumpeter in the World
ERNEST S. WILLIAMS

Uses and endorses the Keefe Harmonic Trumpet and pronounces it, without reservation, the greatest Trumpet that has ever been produced, either in this country or abroad

New York, N. Y., August 13, 1924.

BRUA C. KEEFE MFG. CO., Williamsport, Pa.

Gentlemen: I tried your Harmonic Trumpet most thoroughly during the winter concerts of the Philadelphia Orchestra. I found it the most perfect Trumpet for Symphony Orchestra that I have ever blown. I tried it in the concerts of the Goldman Band, outdoors, and with the Pat Conway Band, outdoors. It is as fine an instrument for Band as for Orchestra, and for both it is immeasurably superior to the European Trumpet I have used for years and so far ahead of other American Trumpets that there is really no comparison. You have made a wonderful Trumpet and I unhesitatingly advise all my friends and professional musicians generally to give it a trial and be convinced, as I have been, that you are making the finest Trumpet today.

Very truly yours,
ERNEST S. WILLIAMS, Enroute with Conway's Band.

Very brilliancy, its solid, pealing, carrying tone, its ease of blowing and its accurate intonation in the high and low registers. Write us about it. We'll tell you all the GREAT men who are now playing it in preference to all other Trumpets.

THE Keefe Harmonic Trumpet will be sent to any Trumpeter for six days' free trial. No matter what Trumpet you now use, we agree that the Harmonic must be better or you send it back. Whether you are in a big Symphony Orchestra or Concert Band makes no difference. The Harmonic Trumpet is the very finest Trumpet and will prove its vast superiority in the best musical organizations. Ask for the Keefe Catalog and let us send you this Trumpet on trial. You'll enthuse over its

BRUA C. KEEFE MFG. CO., Williamsport, Pa.
Chicago Representative: BURCH & PONDER, 339 So. Wabash Avenue
Washington Representative: GEORGE E. BRENNER, Seattle
California Representative: HENRI R. WELCH, Oakland

October 1924 *International Musician*

"The Finest Trumpet made Today," says Ernest S. Williams, Conway's Star Soloist, now on tour with the Conway Band.

KEEFE HARMONIC TRUMPET

PAT CONWAY
Most Popular Bandmaster of Today
Supreme Head of the Brass Department at Ithaca Conservatory of Music

USES AND HIGHLY RECOMMENDS
Keefe Band Instruments

What PAT CONWAY says you should read—and think about. Pat Conway knows band instruments from experience as a performer, from observation as a leader of one of the finest bands, and from every-day contact with all brands and makes of instruments at Ithaca Conservatory. What he says covers the whole ground of instrument making today. Read it:

BRUA C. KEEFE MFG. CO., Williamsport, Pa.
Chicago Representative: BURCH & PONDER, 339 So. Wabash Avenue
Washington Representative: GEORGE E. BRENNER, Seattle
California Representative: HENRI R. WELCH, Oakland

Gentlemen: I have always found it advisable to recognize merit wherever found—in a pupil, a musician or in an instrument. The art of wind instrument making has always had a fascinating interest for me and I have always endeavored to have my players use the finest instruments procurable.

It seems to me today that the several large factories have carried quantity production almost too far in the direction Henry Ford traveled with car manufacture, with the result that we have many Tin Lizzie horns today and few Rolls-Royce quality instruments.

The Keefe instruments in my organization strike me as the best I have ever directed. My Soloist, Ernest Williams, has never produced such fine tone and so well exhibited his fine technic as on the Keefe Trumpet. Other instruments of your manufacture, down to the Bell-ups, are equally meritorious. It is my candid opinion that your product merits the investigation of every man whose living and reputation depend upon his lip and wind.

Write for special circulars on any instrument—Trumpet, Cornet, Trombone, Tuba—anything. Or ask for the Keefe Catalog. We'll allow you six days' trial of any instrument and guarantee to excel any instrument you now have or can get elsewhere—or we'll pay the return charges. Surely this warrants your taking a cue from the greatest bandmaster of today—and investigate! Write right now.

The Gloria Trumpeters

The Most Famous Brass Quartette of the Present Day
They Use and Enthusiastically Endorse

KEEFER Harmonic Trumpets



THE GLORIA TRUMPETERS have performed in the finest churches of New York and other leading cities. They are Radio Favorites, broadcasting over WEAJ every Sunday night. At the last Conventions of the Music Merchants' Association they were one of the features.

Their work is most exacting. They play the most harmonious arrangements imaginable. The magnificent effects they get in the playing of a number like Haydn's "Festivities in E-flat" in the voice parts from some great oratorio or opera—such as the quartet from Sigismondo—are simply marvellous.

New York, October 20th, 1924.

Bras C. Keefer, Pres.

Dear Sir: The Keefer Harmonic Trumpets are a big success in every way, far outstriking our former British and French make Trumpets in respect of intonation, clearness of enunciation, quality and brilliancy of tone and ease of blowing and embouchure. We have tried them out in Church work, with Pipe Organs, with large and small choirs, and in auditoriums of various sizes and for radio broadcasting, as well as for concert practice, and for beautiful effect alone, and for general ensemble use as band or orchestra in every way. Individually and collectively we do fine work with one before and we advise all Trumpeters to do as we did—get Keefer Harmonic Trumpets on free trial for six days and see how fine they are.

Very truly yours, THE GLORIA TRUMPETERS,
Ernest S. Williams,
Keefer Corp.,
New York.

"TO AS THE GLORIA TRUMPETERS SUGGEST"—as Ernest S. Williams suggests—in England, the great bandmaster of America, suggests—as some of the finest Trumpeters of New York union suggest—get a Keefer Harmonic Trumpet for trial. The trial costs you little or nothing, they return expressage if you are not wholly captivated and want to keep the Trumpet.

And we'll make the terms just as easy as any of the mail order factories do. While we make fine professional grade instruments (keeping out of the mail order field), yet we connect with the mail order factories for an extra 25% monthly payments of \$10.00 or less for a Keefer Harmonic Trumpet, or a Keefer Band Harmonic every Keefer instrument, down to the big BBb Wagnerphone, in fact on easy terms when so desired.

Ask for catalogs, free trial blanks, Easy Terms, Schedules, etc.

Bras C. Keefer Mfg. Co.
Williamsport, Pa.

Chicago Representative: JOHN A. BURCH, 339 So. Wabash Avenue
Washington Representative: ALBERT E. ADAMS, Seattle, Wash.



KEEFER "HARMONIC" TRUMPET



The new Keefer-Williams trumpet developed in the last year.

Something New—A Perfect Trumpet!



ERNEST S. WILLIAMS



THE KEEFER-WILLIAMS MODEL. MADE IN THREE DIFFERENT BORES—LARGE, MEDIUM, SMALL

COLLABORATING with Mr. Ernest S. Williams in the past year, we have succeeded in developing a Trumpet that we believe to be truly great. Mr. Williams (and let us say right here that he, too, as a Trumpeter, is truly great) had for years made a hobby of collecting the best Trumpets and Cornets of all countries of both modern and the earlier day craftsmen. He studied each one, noting its best points and by what means obtained. Gradually he arrived at a conclusion as to what methods, gauges, tempers, proportions and construction gave the finest results.

He had almost concluded to build a Trumpet himself, but realizing the expense involved, hesitated. Just at this period he by chance met Bras C. Keefer, and the result of their conference led him to believe that if anyone could carry out his ideas to an ideal finish it was that one man. Mr. Williams spent much time at the Keefer plant, where he was further impressed by the conscientiousness of the workmen and the intelligence put into their work. They built and tested perhaps fifty Trumpets, each time getting closer to the goal, until finally they attained to what had hitherto been to Mr. Williams but a dream of perfection:—THE PERFECT TRUMPET.

Under the name of Keefer-Williams model, we offer to Trumpeters seeking such an instrument this Trumpet, of which Mr. Williams says:

Mr. Bras C. Keefer, President.

My dear Mr. Keefer:

I received the completed Trumpets and put them through every test with the Band, the Orchestra, in Solo, Radio, and Recording Work, and can say positively they have met every test magnificently.

They have a tone that is pure and clear in every note; a carrying power that makes practicable the most delicate phrasing, and an action that is both light and unflinching. Added to these qualities, I find them to have the brilliancy of the best American Trumpets, combined with the firm, compact tone of a well-known English make, plus the velvet of the French, and beyond this a flexibility found only in the finest instruments fashioned by the slow, skilled artisans of the past. A flexibility that permits the bending of a tone, without losing its quality, to meet the discrepancies of other instruments in the orchestra.

Six Days' Trial Allowed—Get the Bore You Prefer and Try It Out—No Obligation Whatever

BRUA C. KEEFER MFG. CO., WILLIAMSPORT, PA.

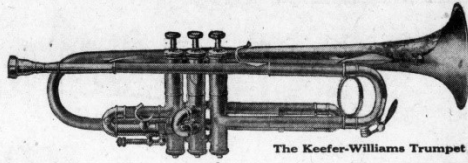
Chicago Representative: JOHN A. BURCH, 339 So. Wabash Avenue
Washington Representative: ALBERT E. ADAMS, Seattle, Wash.



What's interesting here is that all the early ads from 1925 and 1926 show a first slide saddle, something not found on any K-W model and only once on a Harmonic model #24875.

NOT ONLY THE BEST — BUT THE BEST FOR YOU!

In Trumpets, we offer you this wonderful model —practically designed by Ernest S. Williams, and used and recommended by him. It is a big improvement on anything ever before made, here or abroad, and is used by Ernest S. Williams in preference to all other Trumpets. It comes in three bores, and this, with the care we take to fit each instrument to the player and to his work, makes this the best buy in Bb Trumpets ever offered to the professional man.



The Keefer-Williams Trumpet

In Trombones, we offer this model (the Phiharmonic), made to please Gardell Simons, and made to his specifications—and used by him in the Philadelphia Orchestra. It is unlike all other Trombones in many ways. It is NOT built of the same gauge brass from mouthpiece to bell, as are other Trombones. Variations in gauge give it resistance where resistance is required, and take away resistance where resistance isn't desirable—giving the clearest-toned, easiest-playing, fine Trombone ever built.



ERNEST S. WILLIAMS



Catalog Free

THE KEEFER-SIMONS TROMBONE

BRUA C. KEEFER MFG. CO., - - - Williamsport, Pa.

If you are one of the men who can't seem to get a good instrument, you're like the chap we met a short time ago who said his playing career was one "hard blow" after another. Being in the instrument business, we undertook to make an individual study of his requirements. Then we selected for him an instrument that fitted his type of playing—his kind of work—an instrument for his OWN USE.

Now he is getting perfect results—with less effort and real satisfaction. We are willing to make the same study of your playing problem at no expense to you. Just fill in the questionnaire below and we will supply you with an instrument suited to your particular needs. This will be chosen after a careful analysis of your answers by experts.

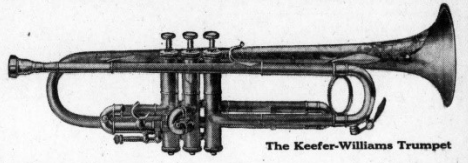
QUESTIONNAIRE

Make of instrument you are now using: _____
 How many years have you played? _____
 What is your age? _____
 Do you use pressure?—Light _____ Medium _____ Strong _____
 What work do you do mostly?—
 Dance _____ Theatre _____ Band _____ Symphony _____
 What bore have you been using?—
 Small _____ Medium _____ Large _____
 What particular difficulty are you having? _____

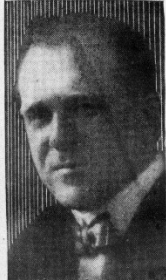


ALMOST MADE TO YOUR OWN ORDER!

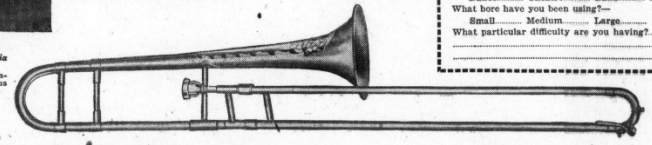
So far as bore and bell and mouthpiece and model go, we practically make your instrument to the specifications you send us in the questionnaire opposite. But so far as the general tone quality, accuracy of intonation and general musical excellence and reliability are concerned, the two models pictured here depend for their fine qualities upon the co-operation—at our factory—of the great Trumpeter, Ernest Williams, of the Philadelphia Orchestra, and Gardell Simons, the renowned trombonist of the same orchestra.



The Keefer-Williams Trumpet



GARDELL SIMONS
1st Trombone, Philadelphia
Symphony Orchestra
Formerly with Sousa, Con-
way, Prior and all Famous
Bands



THE KEEFER-SIMONS TROMBONE

BRUA C. KEEFER MFG. CO., - - - Williamsport, Pa.

If you are one of the men who can't seem to get a good instrument, you're like the chap we met a short time ago who said his playing career was one "hard blow" after another. Being in the instrument business, we undertook to make an individual study of his requirements. Then we selected for him an instrument that fitted his type of playing—his kind of work—an instrument for his OWN USE.

Now he is getting perfect results—with less effort and real satisfaction. We are willing to make the same study of your playing problem at no expense to you. Just fill in the questionnaire below and we will supply you with an instrument suited to your particular needs. This will be chosen after a careful analysis of your answers by experts.

QUESTIONNAIRE

Make of instrument you are now using: _____
 How many years have you played? _____
 What is your age? _____
 Do you use pressure?—Light _____ Medium _____ Strong _____
 What work do you do mostly?—
 Dance _____ Theatre _____ Band _____ Symphony _____
 What bore have you been using?—
 Small _____ Medium _____ Large _____
 What particular difficulty are you having? _____



January 1928 *International Musician*

By this time, the design has changed to one matching a majority of the examples found: a bottom third slide ring and straight brace for the tuning slide.



THE BRUA C. KEEFER MFG. CO.
WILLIAMSPORT, PA.

Makers of the Famous

**KEEFER—
WILLIAMS
TRUMPETS** **KEEFER—
SIMONS
TROMBONES**

Designed and developed by artists of world renown, and manufactured by real craftsmen backed by the experience of more than three-quarters of a century.

**THE WORLD'S GREATEST
BAND AND ORCHESTRA INSTRUMENTS**

*Write Today for Complete
Descriptions and Prices*



Three bore sizes are mentioned in 1926:

1 = 0.458" measured from several examples

2 = 0.435" measured from one example

3 = ? very rare so not sure on this one